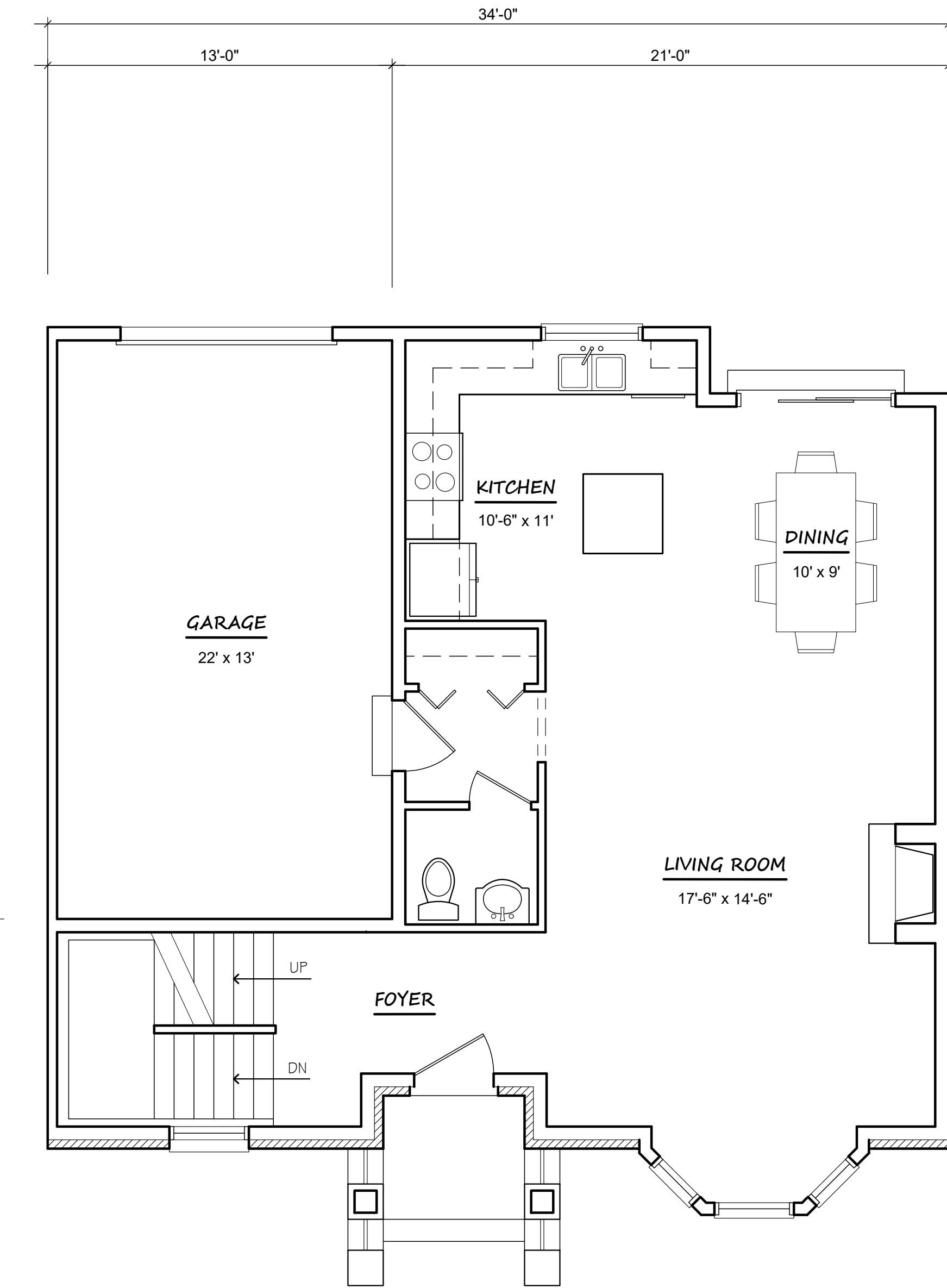


**SECOND FLOOR PLAN**  
 1/4" = 1'-0" 785 s.f. THIS FLOOR



**MAIN FLOOR PLAN**  
 1/4" = 1'-0" 750 s.f. THIS FLOOR  
 1535 s.f. TOTAL



**CLAY AVENUE ELEVATION**  
 3/16" = 1'-0"